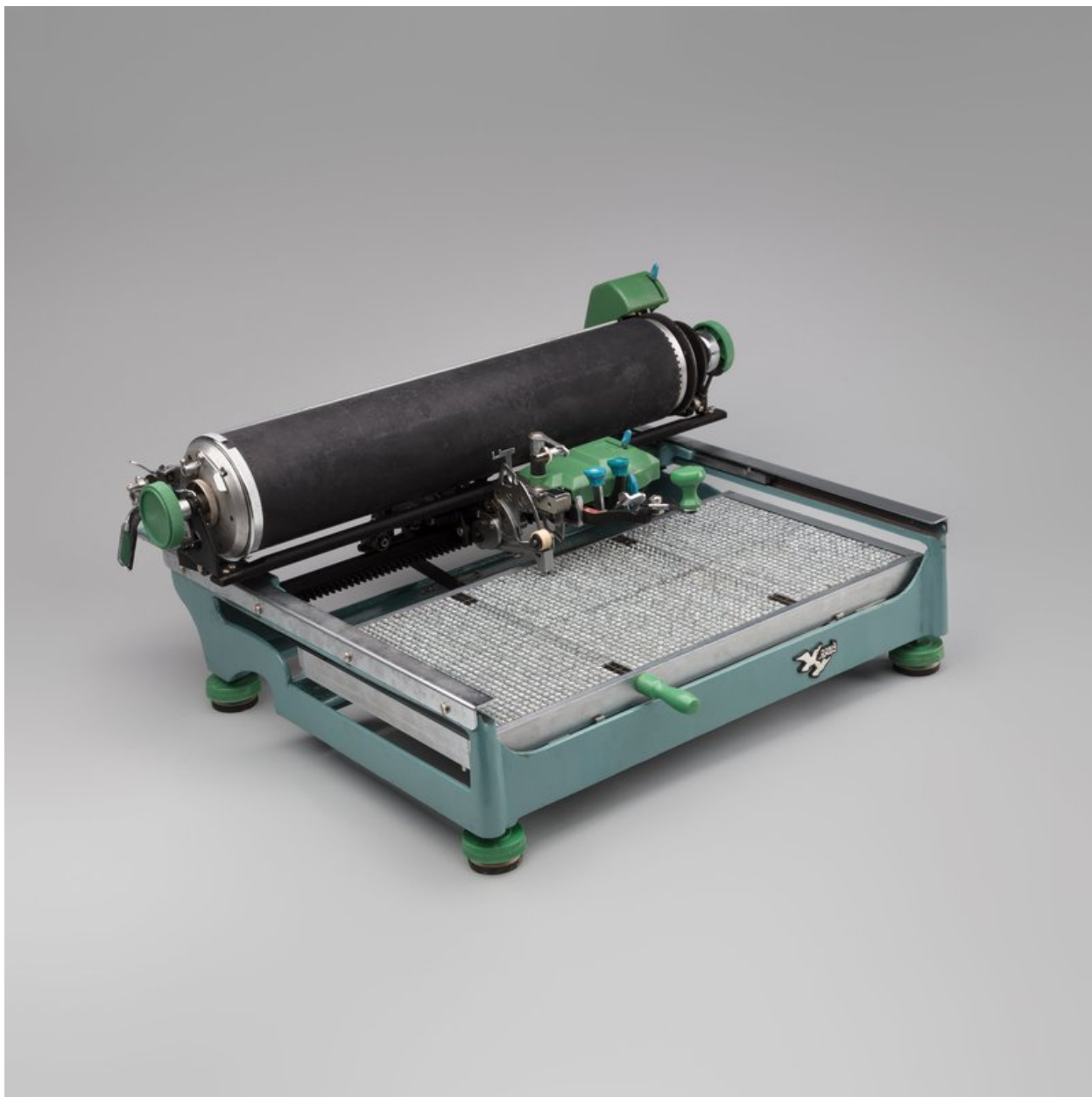


The Mao Era in Objects

Typewriters: Double Pigeon



TITLE

Double Pigeon Chinese Typewriter (双鸽牌中文打字机)

DATE

1950s - early 1990s

CREATOR

SFO Museum

PUBLISHER

SFO Museum

RIGHTS

Courtesy of SFO Museum

DESCRIPTION

With its signature pale green color, the 'Double Pigeon'-brand Chinese typewriter in was the emblematic typewriter of the post-1949 era. Produced by the Shanghai Calculator and Typewriter Factory, it was manufactured from the 1950s well into the 1980s and early 1990s.